

Get a Custom Fit with the U-Fit System

Congratulations! Your helmet was designed with the U-Fit System, offering 36 custom comfort settings. Follow the instructions below to adjust the ride and balance of your helmet.

1. Try on your helmet and check the initial balance, fit, and comfort by rotating your head.
2. Remove the Ear Neck Protector to better see how to adjust the back of the helmet.
3. Pull the black colored "U Channel" (Figure 1) straight away from the black inner liner. There is one "U Channel" in the front of the helmet and one in the back of the helmet.
4. You can tailor the fit by adjusting the tabs, which control ride height, and posts, which control forward / backward / level balance.
5. Adjust the ride of your helmet. There are three tab positions on the "U Channel": A, B, and C. Each of the tab positions affects the location of the ratchet by approximately one inch. For the lowest "ride" on your head, position the tabs to "A". For a higher "ride", position the tabs to "B" or "C".
6. Adjust the balance of your helmet. There are two post positions, 1 and 2 on the black "U Channel". Change the post position to adjust helmet balance.
7. Next, try the helmet back on your head to see if the adjustments to the back of the helmet were helpful. You may want to make another round of adjustments as described above to maximize the balance and fit. Typically firefighters don't need to adjust the front of the helmet. If however, the adjustments to the rear of the helmet don't meet your needs, you can work on the front of the helmet by first removing the browpad. As with the back of the helmet, you can adjust the height and post position on the U Channel piece. Keep in mind that the front of the helmet is a key interface to the SCBA, and most people prefer position C.
8. Lastly, when making your adjustments, re-install the Ear Neck Protector and Browpad, using your fingers to smooth the surfaces to avoid bunching.



To size the Sure-Lock® ratchet headband:

1. Turn the ratchet knob counterclockwise until headband is at largest size (Figure 3).
2. Place the helmet on your head and turn ratchet knob clockwise until headband is snug and comfortable.

To raise or lower ReTrak Visor:

Using either hand, grab visor finger tab, and pull visor down or push visor up into the desired position.

To raise or lower faceshield:

1. Release tension knobs found on both sides of the helmet.
2. Tighten knobs once faceshield is in desired position.

To raise or lower Bourkes:

1. First remove the protective film from both sides of the Bourkes Lenses before use.
2. Using either hand, grab outer edge of either Bourke lens (left or right). Pull down to place Bourkes in the "down" position, lift up to keep Bourkes in the "up" position.

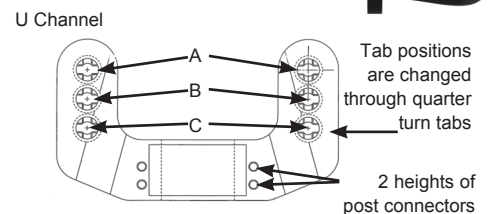


Figure 1

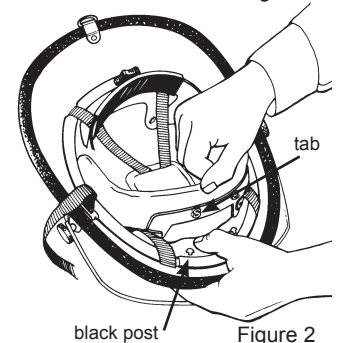


Figure 2

NOTES

- Performance properties of NFPA 1971, Standard on Protective Ensembles for Structural Fire Fighting and Proximity Fire Fighting cannot be tested by users in the field.
- NFPA 1500, Standard on Fire Department Occupational Safety and Health Program requires members who engage in or are exposed to the hazards of structural firefighting shall be provided with and shall use, a protective ensemble that shall meet the applicable requirements of NFPA 1971.
- The protective ensemble must be used by members only under direct supervision of their fire department or employer in a manner consistent with OSHA 29 CFR 1910.132 General Requirements of Subpart I, Personal Protective Equipment.
- For information on NFPA 1851, Standard on Selection, Care and Maintenance of Protective Ensembles for Structural Fire Fighting and Proximity Fire Fighting and basic cleaning and inspection guidelines, visit www.bullard.com/trainonline.

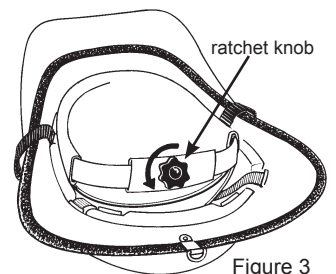


Figure 3

▲ WARNING

Read all instructions and warnings before wearing this helmet.

Only the end user may remove this manual from the helmet. Manual must be removed prior to putting the helmet into service.

Always inspect the helmet for damage and soiling after each use. The helmet should be adjusted by means of the adjustment points provided to permit a proper fit that does not interfere with the SCBA while in use. These adjustments should be done prior to actual structural fire fighting activities. Helmets damaged or deteriorated beyond economical repair should be removed from service.

FAILURE TO FOLLOW THESE INSTRUCTIONS COULD CAUSE DEATH OR SERIOUS INJURY.



▲ WARNING

READ ALL INSTRUCTIONS AND WARNINGS BEFORE USING THIS FIREFIGHTER HELMET.

Bullard helmets are constructed with high-quality materials and workmanship. They are engineered to provide limited protection against head injuries, when properly adjusted for fit and when worn by firefighters during normal fire fighting activities. They are not designed for direct contact with flames or molten metal, or for protection against hazardous chemicals, biological, or radiological agents. Contact of these fire helmets with live wires should be avoided. NEVER ALTER OR MODIFY the helmet's design or construction without explicit written instructions from Bullard. Inspect your helmet and suspension system regularly, regardless of how often it is used. If you notice any sign of wear, damage, abuse, or environmental degradation, replace the shell and/or suspension immediately. If the helmet has sustained a forcible blow (impact), it must be replaced, even if there is no visible damage.

THIS HELMET MUST BE PROPERLY ADJUSTED AND SECURED TO THE HEAD WITH ALL COMPONENTS IN PLACE, USED AS SPECIFIED IN MANUFACTURER'S INSTRUCTIONS.

Do not modify or replace any component of this helmet, including the shell, energy-absorbing system, retention system, fluorescent retroreflective markings, ear covers, or faceshield with components or accessories other than those certified for use with this product. Modification or replacement with other than Bullard parts voids compliance with NFPA 1971.

NO PROTECTIVE HEADGEAR CAN PROTECT AGAINST ALL FORESEEABLE IMPACTS. For maximum protection under these standards, the helmet must be of good fit and all retention straps must be securely fastened. Use only with a Bullard suspension system. This helmet should be inspected by the user for visible damage prior to each use. Immediately replace shell or suspension at first sign of wear, damage, or degradation.

HELMETS CAN BE SERIOUSLY DAMAGED BY SOME COMMON SUBSTANCES, THOUGH SHOW NO DAMAGE TO THE NAKED EYE. CLEAN ONLY WITH MILD DETERGENT AND WATER. DO NOT USE OR EXPOSE HELMET TO PAINTS, SOLVENTS, CHEMICALS, ADHESIVES, GASOLINE, OR LIKE SUBSTANCES. STORE IN A DRY, COOL PLACE, AWAY FROM DIRECT SUNLIGHT.

Failure to follow these instructions and avoid potentially hazardous situations could result in death or serious injury

Pre-Use Information

NOTE

If your helmet is equipped with a Bullard Traklite, reference Traklite User and Installation Instruction Manual.

Marking Recommendation and Restrictions:

Use only accessory equipment of the type included in the original helmet or approved by Bullard. Do not use unauthorized accessories because they can adversely impact the performance of the helmet.

All helmet markings (e.g. front identification shields, title tapes, decals, retro-reflective trim, etc.) must either be supplied by a Bullard authorized fire service distributor or authorized for use in writing by Bullard.

All helmet accessories (e.g. flashlight brackets, communications head sets, etc.) must be either supplied by a Bullard authorized fire service distributor or authorized for use in writing by Bullard.

Contamination and Decontamination

Special precautions must be taken if your protective helmet becomes contaminated with chemical or biological hazardous materials. The guidance for these precautions should be coordinated with the appropriate (local, state, and federal) authorities having jurisdiction for hazardous materials (HAZMAT).

Contaminated helmet ensembles should be isolated, contaminate(s) identified, and bodily contact should be avoided. Avoid spreading the contamination to interior spaces of buildings or vehicles, any living quarters, or personal belongings. If possible, seal the contaminated ensemble in a leak proof, sealable, air tight container. Disposal should be done in adherence to local, state, and federal laws. If the helmet is to be reused, it MUST be decontaminated before reuse. Decontamination should be performed using procedures established by decontamination professionals that will remove contaminate(s) while minimizing damage or compromise to the helmet. Failure to do so could result in increased risk of injury, illness, disease, or death.

Bullard helmet model UST/USTM meets or exceeds all performance specifications under NFPA 1971.

California Proposition 65 ▲ WARNING

Cancer and Reproductive Harm - www.P65Warnings.ca.gov.

Propuesta de California 65 ▲ ADVERTENCIA

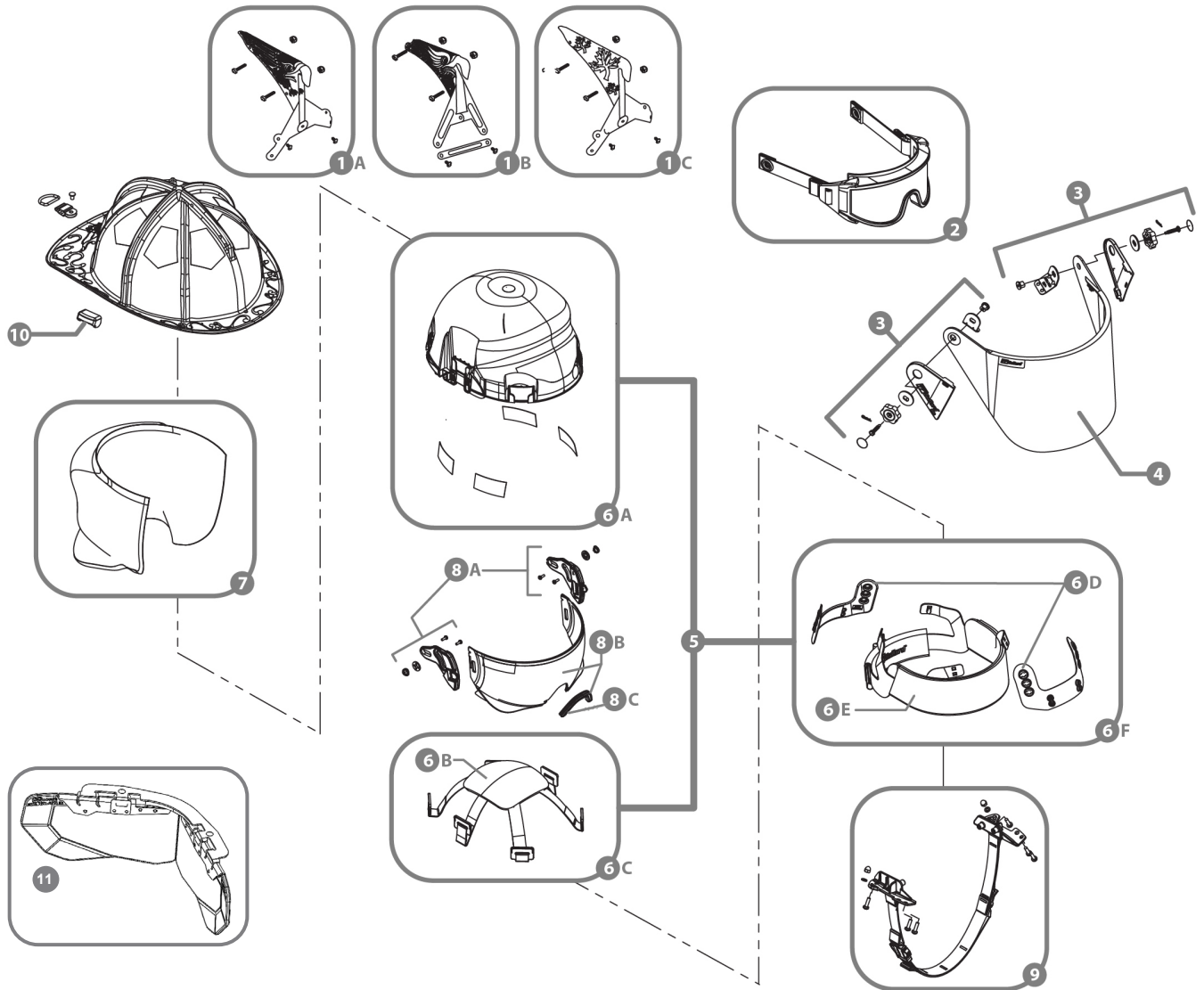
Cáncer y Daño Reproductivo - www.P65Warnings.ca.gov.

Proposition de la Californie 65 ▲ AVERTISSEMENT

Cancer et Troubles de l'appareil reproducteur - www.P65Warnings.ca.gov.

UST/USTM and UST™-LW Series Helmets User Manual

Replacement Parts for UST/USTM and UST-LW Series Helmets



ITEM#	CATALOG#	DESCRIPTION	ITEM#	CATALOG#	DESCRIPTION
1A	OR600 or	6" Brass Stars & Stripes Eagle	6F	R637	Sure-Lock® Ratchet Headband
1B	OR503 or	5" Brass Eagle	6F	R637L	Sure-Lock® Ratchet Headband with Leather Brow Pad (not pictured)
1C	OR6000ML	6" Brass Maple Leaf Leather Front Holder	7	R721	Rip-Stop Nomex Ear/Neck Protector
2	I22, IZ3	ESS Innerzone Goggle		R741	Rip-Stop PBI/Kevlar® Ear/Neck Protector (shown)
	FP2, FP3	ESS FirePro™ 1971 Goggle		R726	Nomex Ear/Neck Protector with Throat Strap
3	R152	Faceshield mounting hardware kit	8A	R130	Visor Retainer Kit (ReTrak only)
4	R334	4" Polyarylalate Faceshield	8B	R350	Visor + nose guard (ReTrak only)
5	R921 UST/USTM and UST-LW non-ReTrak inner shell assembly R924 UST-LW ReTrak inner shell assembly R926 UST/USTM ReTrak inner shell assembly (shown)	Includes: Sure-Lock ratchet, crown pad, headband, brow pad, M-PACT Plus impact liner, and 6 point Nylon crown strap assembly	8C	R351	3 Replacement nosepieces
6A	NA	M-PACT Plus impact liner/inner shell-Not available individually	9	R148	Nomex Chin strap with Quick-Release Buckle, Postman's Slide Fastener, Screw Sleeves and Dogbone Washer for non-ReTrak UST/USTM and UST-LW Helmets
6B	R636	Crown Pad		R148UV	Nomex Chin strap with Quick-Release Buckle and Postman's Slide Fastener for all ReTrak UST/USTM and UST-LW Helmets (shown)
6C	R112	Nylon Crown Straps with Crown Pad (R114 for ReTrak, shown)		R131	10 visor latches (ReTrak only, not shown)
6D	R628	Ratchet height adjuster	10	USTBLOCKKIT	Chinstrap Mounting Block Kit (not shown)
6E	R635	Brow Pad	11	R319	NFPA Bourkes Replacement Kit
6E	R635L	Leather Brow Pad (not pictured)			

Colors:

Glossy Model UST helmets are available in: red, black, yellow, white, blue, orange, lime-yellow, pink, and green.

Matte Finish Model USTM helmets are available in: red, black, yellow, white, camo, pink camo, winter camo, blaze camo, and pink ribbon.

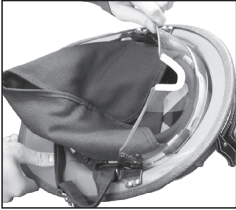
Super Matte Finish Model UST-LW helmets are available in: red, black, yellow, and white



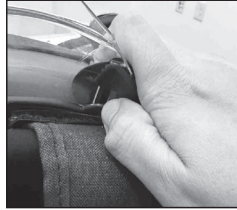
Cleaning

Remove ear/neck protector, headband, and crown straps. Clean inner and outer shells with mild soap or detergent. Wash the ear/neck protector, headband, brow pad, crown pad, and crown straps in warm, soapy water and air dry at room temperature. Clean faceshields, Bourkes lenses and goggles with mild detergent, rinse thoroughly with clean water, and dry with a soft cloth.

Cleaning the ReTrak Visor



1) Pull visor down to "as worn" position



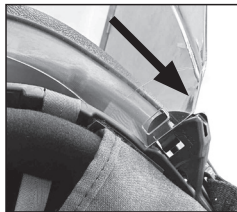
2) Push down the clip buttons then slide the visor up



3) Remove the visor for cleaning or replacement



4) Clean visor with mild soap, rinse thoroughly with clean water, and dry with a soft cloth



5) Align the visor over each retainer, matching the notch with the button and push until you hear a click.



"Click"

6) You are all set



⚠ WARNING

Users should not wear helmets that are not thoroughly cleaned and dried. Failure to follow this instruction could result in death or serious injury.

Bullard Fire Helmet Warranty

Bullard offers a best in class warranty. Bullard warrants to the original purchaser that the firefighter helmet and non-electronic components are free of defects in materials and workmanship under normal use and service for a period of five (5) years from the date of manufacture on the helmet shell and lifetime (as defined in NFPA 1851: 10 years) warranty on the non-electronic components. Bullard's obligation under this warranty is limited to repairing or replacing, at Bullard's option, articles returned within the warranty period and which, after examination, are shown to Bullard's satisfaction to be defective, subject to the following limitations:

Helmet must be returned to Bullard with shipping charges prepaid.

Helmet must not be altered from its original factory configuration.

Helmet must not have been abused, neglected, or damaged in transport.

In no event shall Bullard be responsible for consequential damages incurred by the user or a third party, whether those damages include loss of use or other indirect, incidental, or consequential damages, special costs or expenses. Bullard offers no warranty on components or accessories NOT manufactured or supplied by Bullard.

ANY IMPLIED WARRANTIES, INCLUDING WARRANTIES OF MERCHANTABILITY AND FITNESS FOR A PARTICULAR PURPOSE, ARE LIMITED IN DURATION TO FIVE (5) YEARS ON THE HELMET SHELL AND LIFETIME (NFPA 1851: 10 YEARS) ON THE NON-ELECTRONIC COMPONENTS FROM THE DATE OF MANUFACTURE OF THIS PRODUCT.

RETURN AUTHORIZATIONS: Contact Customer Service to obtain written permission to return any product. Material returned for credit will be subject to factory inspection. Current products or products under warranty will be subject to a rehandling charge less original freight charge. Obsolete or special order products cannot be returned without written permission.



CERT. MOD.

Bullard Center
2421 Fortune Drive
Lexington, KY 40509 • USA
877.BULLARD (285.5273)
Tel: +1.859.234.6616
Fax: +1.859.246.0243

Americas Operations
1898 Safety Way
Cynthiana, KY 41031 • USA
877.BULLARD (285.5273)
Tel: +1.859.234.6616
Fax: +1.859.234.8987

Bullard GmbH
Dieselstrasse 8a
53424 Remagen • Germany
Tel: +49.2642.999980
Fax: +49.2642.9999829

Bullard Asia Pacific 51
Changi Business Park
Central 2
#03-04 The Signature
Singapore 486066
Tel: +65.6745.0556
Fax: +65.6797.0299

©2023 Bullard. All rights reserved.
Bullard, Sure-Lock, and Hard Boiled are registered trademarks of Bullard.
Nomex and Kevlar are registered trademarks of E.I. du Pont de Nemours & Company.
PBI is a registered trademark of Celanese Corporation.
U.S. Patent No. 5,150,479.